

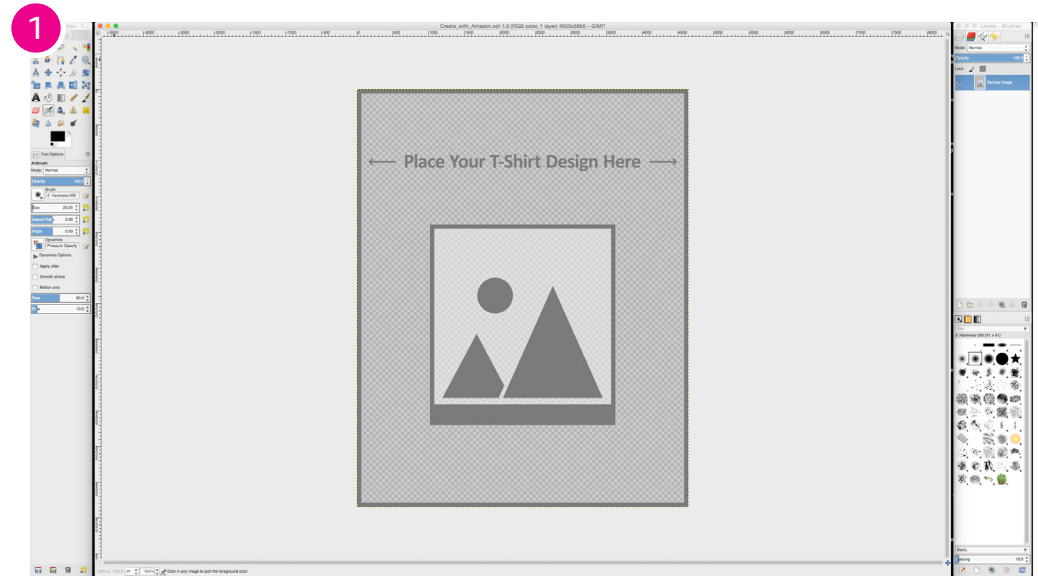


T-Shirt Creation Reference

Guide for GIMP Template

Creation Reference | Place Your Design

After downloading the GIMP template file, **T-shirt_template-Merch_by_AMZN.xcf (1)**, you will be able to place your art into the document to preview it.

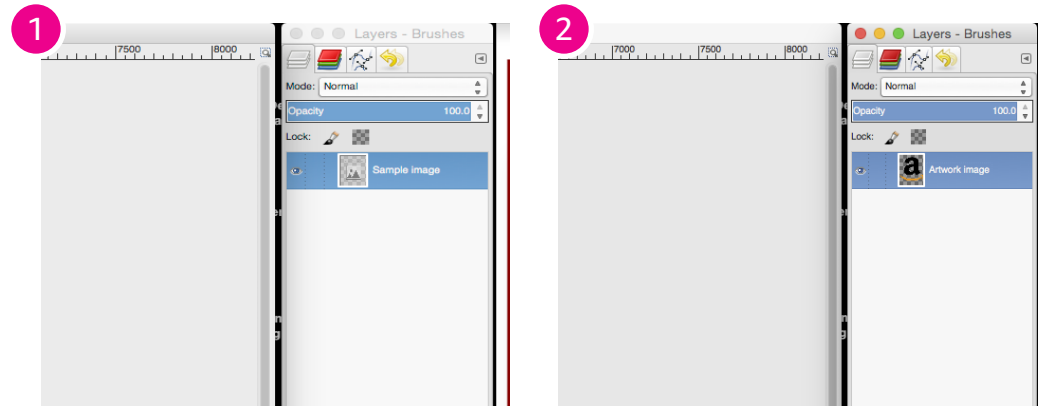


Creation Reference | Replacing Sample Art

When you open the template file, click on the highlighted layer **(1)**, "Sample Image". Start by deleting this layer and add your artwork on a new layer **(2)**.

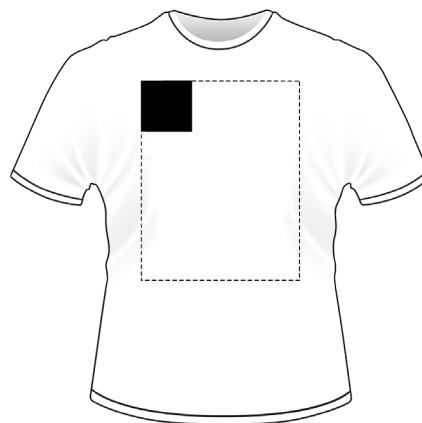
You can preview your design, resize and edit the art, but make sure it's within the canvas **(3)**.

Refer to the next page, to understand the size and position of artwork on the t-shirt.

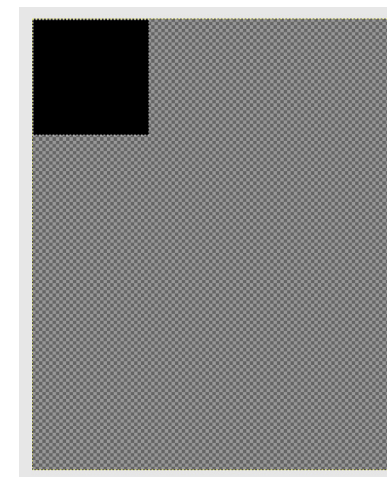


Creation Reference | Position of artwork on the t-shirt

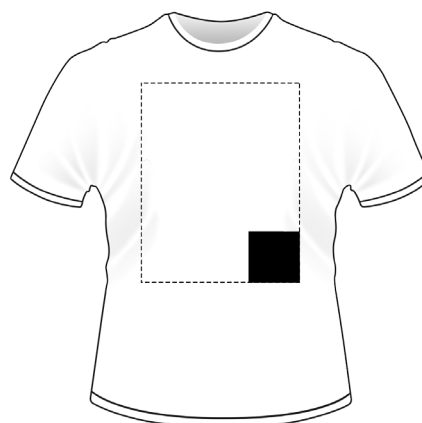
Position of the artwork on the t-shirt aligns with the position of artwork on the canvas. So make sure you position your artwork on canvas appropriately to perfectly reflect it on where you intend to see it on the tshirt.



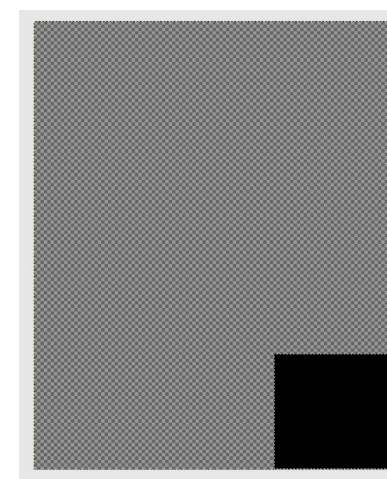
Positon on tshirt



GIMP artboard



Positon on tshirt

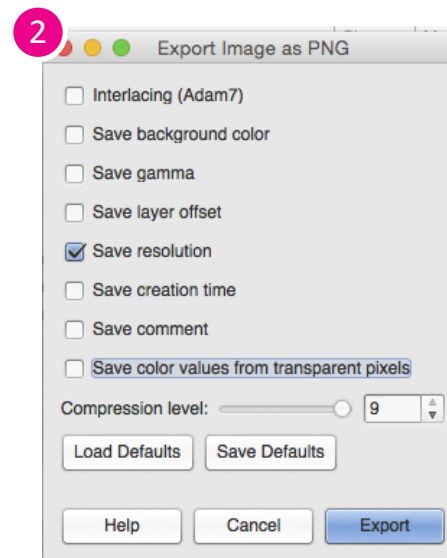
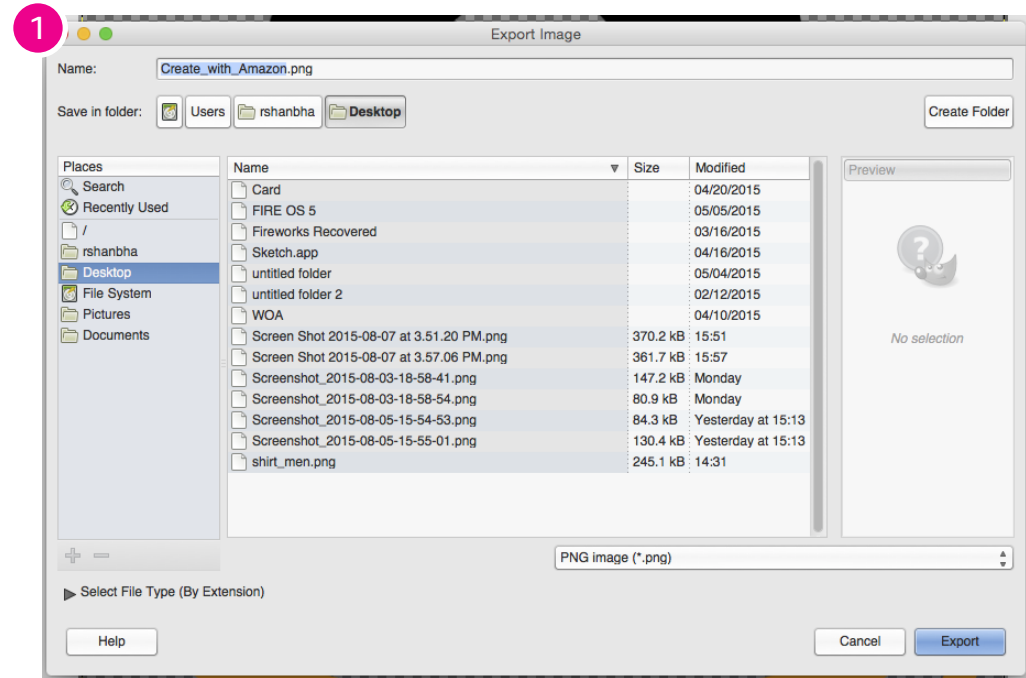


GIMP artboard

Creation Reference | Save Out Your Design

After previewing your design on the GIMP template, "Export" your artwork out as a new PNG file **(1)**. This will save you artwork at 300 ppi and 15" x 18" (4500 px by 5400 px) dimension.

This will be the asset that you upload to Merch by Amazon.



Creation Reference | Other Available Resources

In order to provide wide support, basic canvas templates are available for Adobe Photoshop, Illustrator and GNU Image Manipulation Program (GIMP).

These resources are available on our website.



Photoshop



Illustrator



GIMP